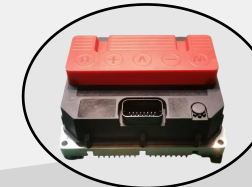
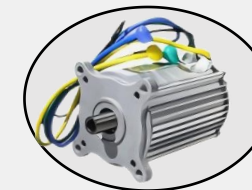




# SiAECOSYS-SEVS



Elevate Your EV with SiA&JinHao Drive Train Solutions!





# CONTENTS

**01**

Company Brief

**02**

Powertrain Series for  
Medium/Low Speed EV.

**03**

Electric Conversion Solution

**04**

Project Case

**05**

Contact Information



# Smart Electric Vehicle System

As a subsidiary of SiAECOSYS with over 14 years of experience in the EV industry, SEVS provides integrated electric powertrain solutions tailored for low-speed electric vehicles. Our focus is on lithium battery systems, CAN Bus-based intelligent controls, and modular kits suitable for golf carts, mini buses, logistics vehicles, and selected three-wheelers.

Our strength lies in **technical integration**: we combine battery, controller, motor, and axle into one optimized system, simplifying the development cycle for EV manufacturers. This integration not only improves R&D efficiency but also ensures system compatibility, safety, and performance stability in real-world conditions.

## Core Value Proposition

### •Integrated Solutions, Technically Ready

Our pre-integrated kits save time and reduce engineering complexity. EV factories benefit from quicker prototyping and shorter go-to-market timelines.

### •Scale Advantage through Centralized Orders

We consolidate recurring orders from multiple clients and distribute them across a unified supply chain. This enables large-volume procurement of core components, leading to significant **cost reduction through economies of scale**.

### •Shared Cost Reduction, Mutual Growth

The cost advantages gained from bulk orders are not kept to ourselves, but **shared with our partners**, creating a win-win model where every stakeholder benefits from growing volumes.

## Additional Capabilities

- Customization for new EV projects
- Professional QA/QC and international logistics support
- Strong industrial network to assist with factory development and sourcing in China



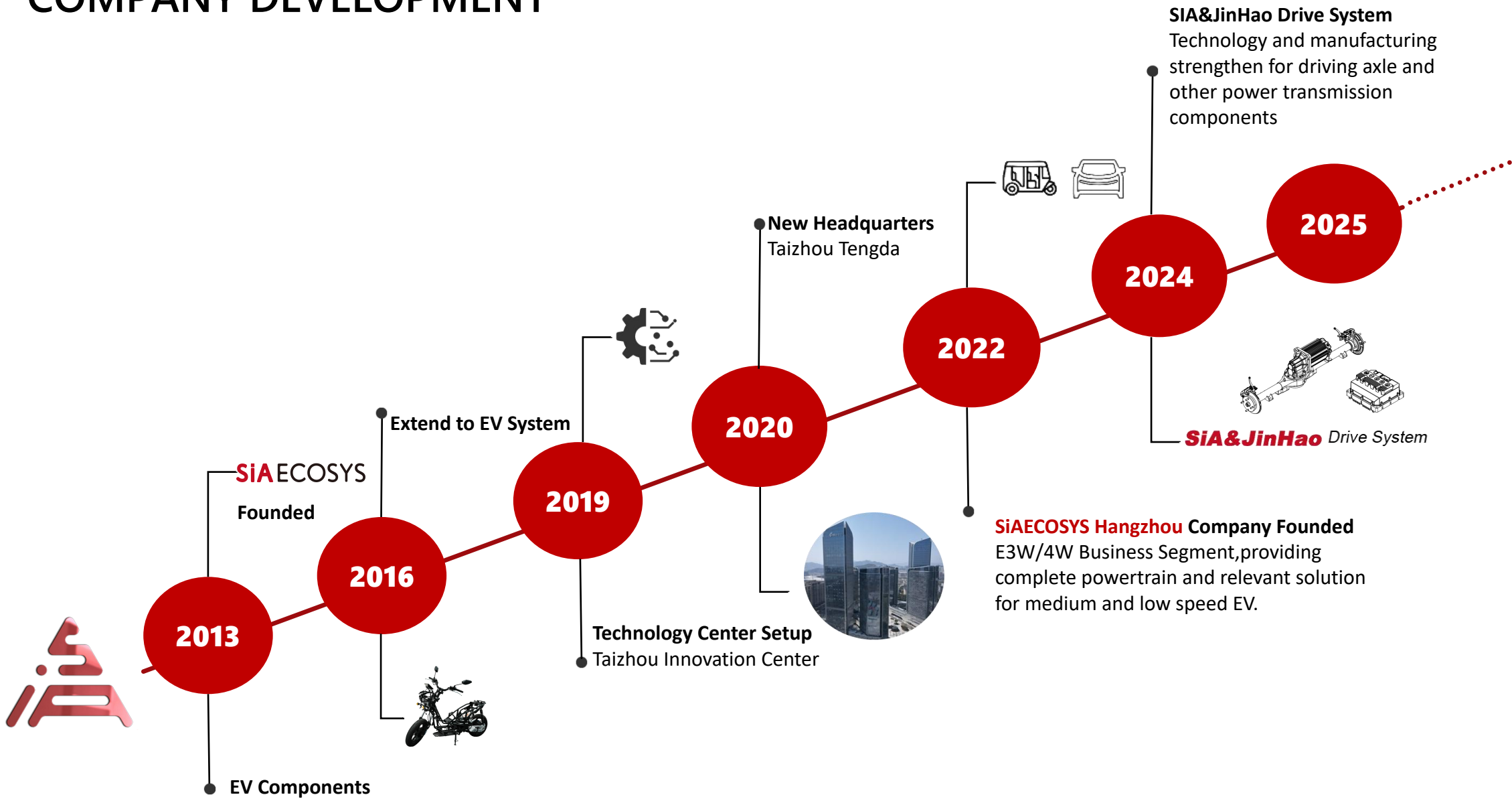
# SiAECOSYS

## About SEVS Segment



## Make It Happen!

# COMPANY DEVELOPMENT





**SIAECOSYS PRODUCTS**  
**EXPORTED TO**  
**80+ COUNTRIES**

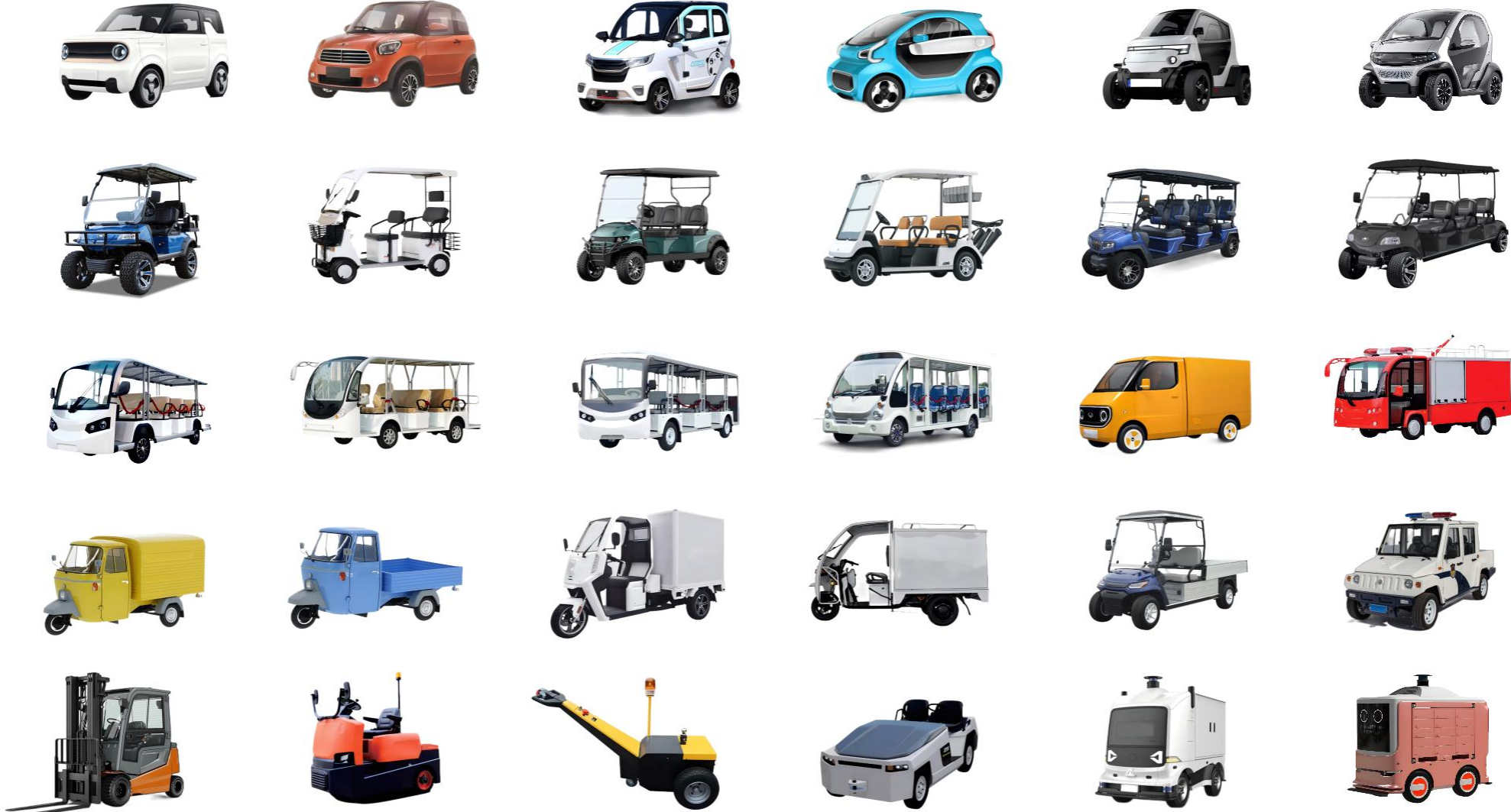


Argentina	New Zealand
Australia	Nigeria
Bangladesh	Norway
Belgium	Pakistan
Brazil	Peru
Canada	Philippines
Chile	Poland
Colombia	Portugal
Cuba	Qatar
Egypt	Russia
Ethiopia	Sri Lanka
France	Saudi Arabia
Germany	Singapore
Greece	South Africa
Hungary	South Korea
India	Spain
Indonesia	Sweden
Israel	Switzerland
Italy	Tanzania
Japan	Thailand
Kenya	Turkey
Malaysia	United Arab Emirates
Mexico	United Kingdom
Morocco	United States
Netherlands	Vietnam





# Typical EV Models Applied Power Train We Make





## TYPICAL PARAMETERS

Motor: PMSM 10kW, Peak 20kW, 7500RPM, 110Nm.

Rated Voltage: 72/84/96V

Speed Reduction Ratio: 8:1, 10:1, 12.6:1, etc.  
(Customizable)

MCU Basic Functions: CAN 2.0, Programmable,  
Power Regenerable, HSA,  
Anti-Slope.

## KEY FEATURES

Complete Solution Entirely Engineered & Tested.

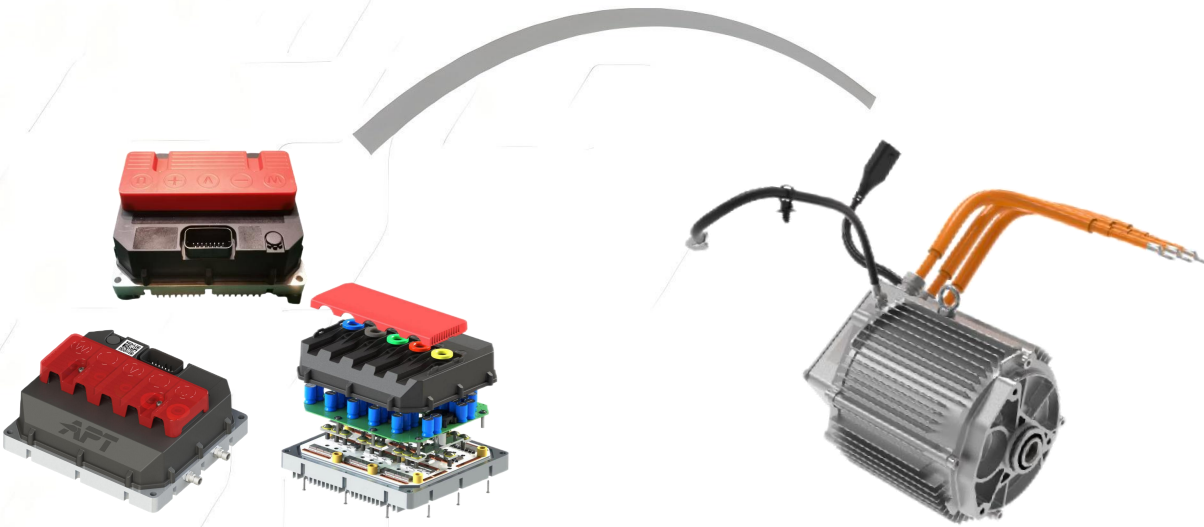
PMSM Motor of High Efficiency 95% Maximal.

Smart MCU Programmable, Blue-Tooth Connection,  
Full Protection Features.

Durable Driving Axle of Low Noise, Customizable.







**Engineered Powertrain for PMSM 7.5kW**  
**Tested Ready Solution for Mini EV Development**



## TYPICAL PARAMETERS

Motor: PMSM 7.5kW, Peak 15kW, 7500RPM, 100Nm.

Rated Voltage: 72/84/96V

Speed Reduction Ratio: 8:1, 10:1, 12.6:1, etc.  
(Customizable)

MCU Basic Functions: CAN 2.0, Programmable,  
Power Regenerable, HSA,  
Anti-Slope.

## KEY FEATURES

Complete Solution Entirely Engineered & Tested.

PMSM Motor of High Efficiency 95% Maximal.

Smart MCU Programmable, Blue-Tooth Connection,  
Full Protection Features.

Durable Driving Axle of Low Noise, Customizable.



[jinhao@siaecosys.com](mailto:jinhao@siaecosys.com)



[www.jhaxle.com](http://www.jhaxle.com)

## TYPICAL PARAMETERS

Motor: PMSM 5kW, Peak 10kW, 6000RPM, 90Nm.

Rated Voltage: 48/60/72V

Speed Reduction Ratio: 8:1, 10:1, 11.87:1, etc.  
(Customizable)

MCU Basic Functions: CAN 2.0, Programmable,  
Power Regenerable, HSA,  
Anti-Slope.

## KEY FEATURES

Complete Solution Entirely Engineered & Tested.

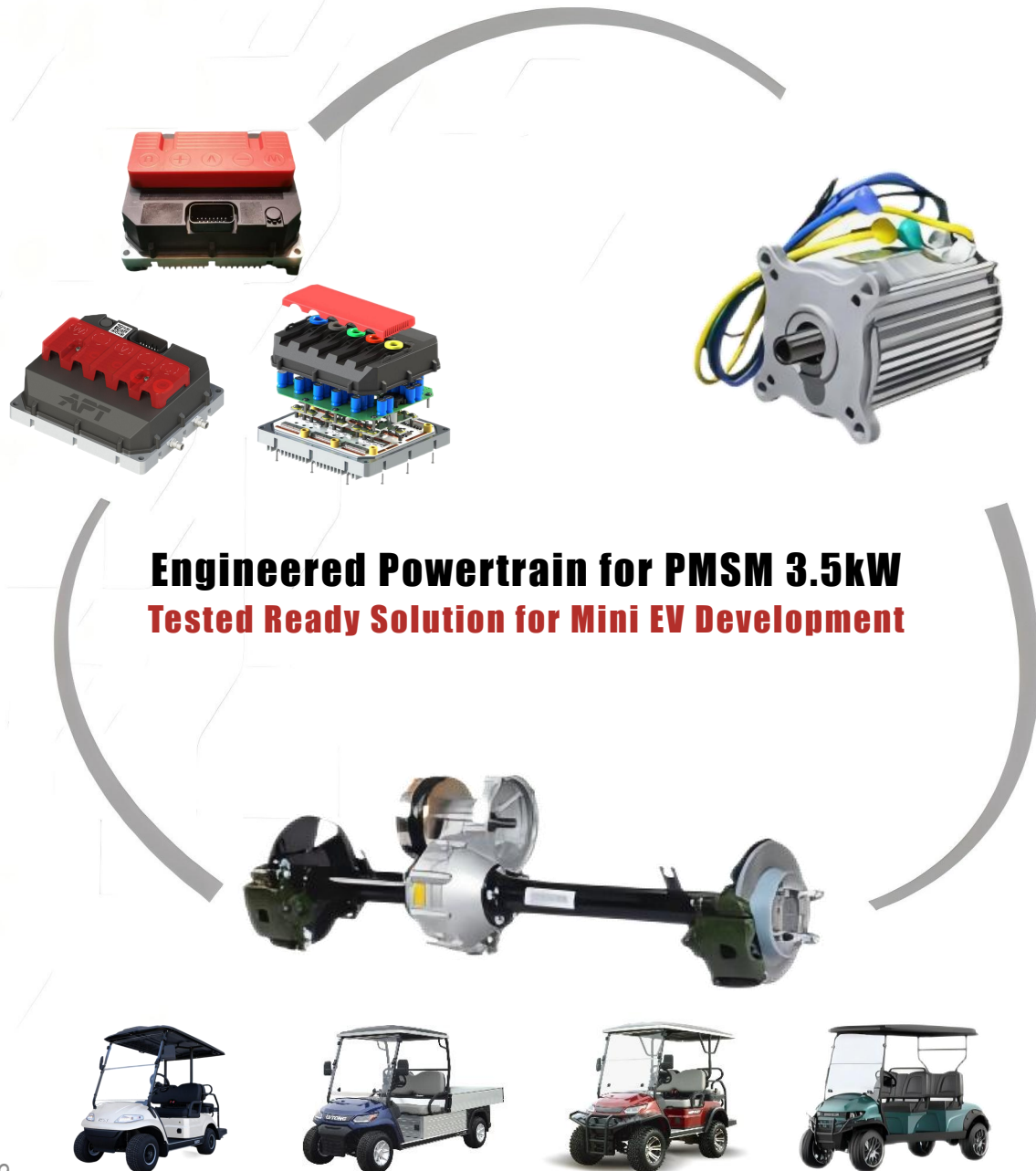
PMSM Motor of High Efficiency 95% Maximal.

Smart MCU Programmable, Blue-Tooth Connection,  
Full Protection Features.

Durable Driving Axle of Low Noise, Customizable.







**Engineered Powertrain for PMSM 3.5kW**  
**Tested Ready Solution for Mini EV Development**

## TYPICAL PARAMETERS

Motor: PMSM 3.5kW, Peak 7kW, 6000RPM, 80Nm.

Rated Voltage: 48/60/72V

Speed Reduction Ratio: 8:1, 10:1, 11.87:1, 12.76:1, etc.  
(Customizable)

MCU Basic Functions: CAN 2.0, Programmable,  
Power Regenerable, HSA,  
Anti-Slope.

## KEY FEATURES

Complete Solution Entirely Engineered & Tested.

PMSM Motor of High Efficiency 95% Maximal.

Smart MCU Programmable, Blue-Tooth Connection,  
Full Protection Features.

Durable Driving Axle of Low Noise, Customizable.



[jinhao@siaecosys.com](mailto:jinhao@siaecosys.com)



[www.jhaxle.com](http://www.jhaxle.com)

## TYPICAL PARAMETERS

Motor: AC 3kW, Peak 6kW

Rated Voltage: 48/60/72V

Speed Reduction Ratio: 18:1, 27:1, 41:1, etc.  
(Customizable)

MCU Basic Functions: CAN 2.0, Programmable,  
Power Regenerable, HSA,  
Anti-Slope.

## KEY FEATURES

Engineered & Pre-tested for Heavy-Duty  
Performance.

AC Motor for High-Torque Demands of Forklifts  
& Trailers.

Smart MCU Programmable, Blue-Tooth Connection,  
Full Protection Features.

Durable Driving Axle of Low Noise, Customizable.



**Engineered Powertrain for PMSM 3kW 72V**  
**Tested Ready Solution for Mini EV Development**







**AC 4kW Tuktuk/Keke Conversion Kit**

## MAIN PARAMETERS

Motor: AC 4kW Rated, 8kW Peak, 82 Nm.

Rated Voltage: 60/72V

MCU Features: CAN 2.0, Programmable,  
Power Regenerable, HSA,  
Anti-Slope.

Gear Speed Reduction Ratio: 1:8.34

Battery: LFP 76V119Ah

Charger: 1800W/25Ah for 4.5 hours  
3800W/45Ah for 2.5 hours

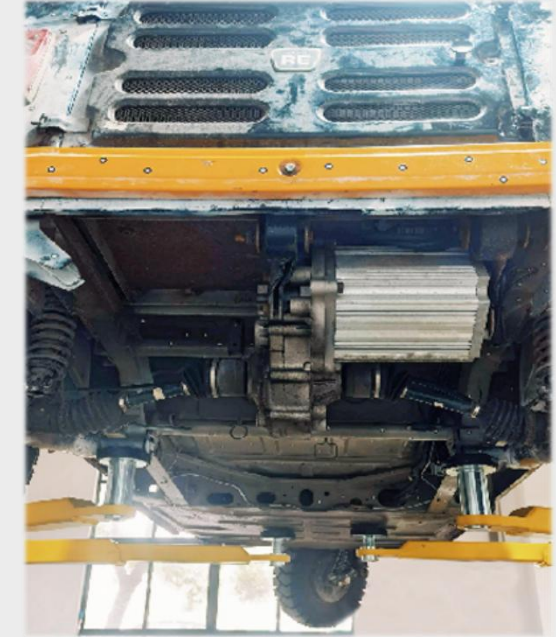


[jinhao@siaecosys.com](mailto:jinhao@siaecosys.com)



[www.jhaxle.com](http://www.jhaxle.com)

## **Innovative & Complete Electrify/Conversion Solution for Classic Tuktuk/Keke.**



Smart Powertrain with CAN Bus 2.0  
Efficient and Durable Gear Box of Automotive Grade  
Max. Speed 50-60 km/h, Mileage 110-130 km with 9.1 kWh  
Highly Tailor-Made Complete Solution, Pre-tested  
Over 85% Energy Cost Saved after Electric Conversion  
Power Transmission Efficiency >98%



***AC 4kW Electric Conversion Kit***



# PERFORMANCE PARAMETERS

Fully Loaded Weight: 800kg

Transmission Efficiency: 96%

Max Speed: 55km/h (@ S mode)

Hill-Start Climbing Speed:  $\geq 20$  kph (At 30% gradient)

Max. Climbing Gradient: 30% (When off load)

Duration to Reach 50km/h: 9.5S

Range per Charge:  $\geq 100$ -120 km



## Some Partners

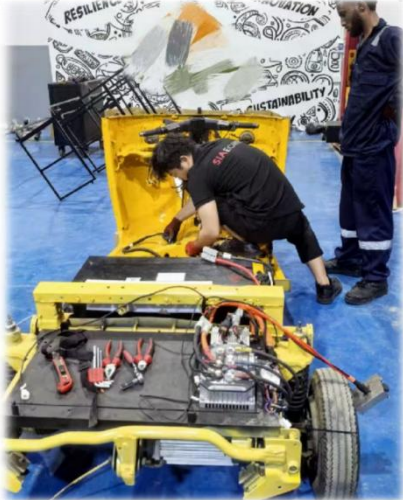
**SiAECOSYS-SEVS**





## Project Case

**SiAECOSYS-SEVS**



# CONTACT US

**SiAECOSYS-SEVS**



**Tel:**+86-0571-85157970



**Email:**SEVS@SIAECOSYS.COM



**Office Add:**302-303 Building#4, Haichuang S&T Center, Yuhang District, Hangzhou City, Zhejiang Province, China.

**R&D Center:**4F, Building 8, 188 Kaifa Road East, Development Zone, Taizhou City, Zhejiang Province, China.

**Factory Add:**899 Juying Road, East New District, Taizhou Bay New Area, Taizhou City, Zhejiang Province, China.



WeChat



WhatsApp



Website-SEVS



Website-SiA&JinHao



***Elevate Your EV with SiA&JinHao Drive Train Solutions!***

***MAKE IT HAPPEN!***

